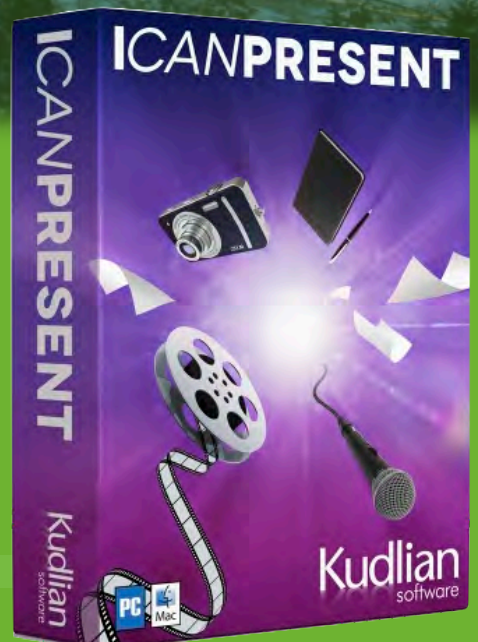


I CAN PRESENT

GREEN SCREENING



I Can Present Green Screening - Mac OS X



Introduction	5
Using I Can Present is a great way to engage students in all curriculum activities and an excellent aid for improving your speaking and presentation skills, in any language.	5
System Requirements for I Can Present Version 2.2 - Mac	6
Installing the Software	6
Getting Started	7
Quick Start	8
The Main Window	8
Getting Ready	8
Recording	10
Creating and Editing Slides	11
Adding Slides	11
Deleting Slides	12
Importing Pictures	13
Import from PDF	14
Writing a Script	15
Adding Symbols to a Slide	16
To add a symbol:	16
To move a symbol:	16
Deleting a Symbol	16
Changing the Symbol Size	16
Editing Symbols	16
Temperature	16
Left and Right Justified Pin Labels	17
Wind Speed	17
Pollen	17
UV Categories	18
Guidelines for UV Risk	18
Sport Symbols	19
Project Settings	20
Show Watermark	20
News Ticker	20
Date and Time	20



Changing the Temperature Scale	21
The Recording Studio	22
Supported Cameras	23
Camera and Microphone	23
Microphone Only	24
Getting Your 'Studio' Ready to Record	25
Recording Layouts	25
Chroma Key	25
Split Left - Split Right	29
Picture in Picture	29
Teleprompter speed	30
Changing the Size of Text	30
Effect	30
Leave Studio	30
Recording	31
Playback	32
Exporting a Movie	32
Saving an I Can Present File	34
Opening an I Can Present File	34
Preferences	35
Autosave	35
Check for Updates	35
Chroma Key Explained	36
Lighting	37
Colour Models	38
Red, Green or Blue	38
From Colour	38
Chroma Key - More Settings	39
Tolerance	39
Blend	39
Despill	39
Blur the Matte	40
I Can Present Mobile	4



Appendix I	43
Using a Mobile Device as the Camera	43
HERE'S HOW YOU DO IT:	43
Appendix II	45
Links to Support Resources and Updates	45
M4V Files	45
Acknowledgements	45
Appendix III	46
Update projects and events from previous versions of iMovie in iMovie (2014)	46



Introduction

Using I Can Present is a great way to engage students in all curriculum activities and an excellent aid for improving your speaking and presentation skills, in any language.

- You can create and film your own presentations, training or information videos, quickly and easily and then send them to colleagues or post them on social media sites.
- Use green screening to add pictures in the background or create a weather forecast.
- It's easy to import your own pictures and PDF images
- Add your own script into the tele-prompt which automatically scrolls as you record your presentation.
- Enter the script in any language.
- Add symbols onto a slide. A variety of symbols are provided for various presentations.
- Add watermark, news ticker, date and time.
- Optional recording studios. green screen, side by side and picture in picture
- Use PDF files from PowerPoint or Keynote for example.
- Movies can be exported or shared directly to Twitter, or to iTunes or iMovie, where they can be prepared for publication for use on websites, entrance hall presentation screens, send to colleagues and many more.
- Bring presentations to life with I Can Present.
- Oh and did we mention its really easy to use?

This guide is for Version 2 or later.

Author © Roger Young MSc, Cert Ed



System Requirements for I Can Present Version 2.2 – Mac

A Macintosh running Mac OS 10.11 or later.

Disk Space: Around 28MB of free hard disc space

Memory: 2GB RAM minimum, preferably 4GB

You are recommended to install the demonstration version before purchasing I Can Present.

This will allow you to test it with your system and devices.

Additional Requirements

A suitable USB web camera or DV camcorder*.

NOTE: For smooth video you will require a web cam that supports frame rates of over 15 frames per second. It is preferable for smooth video capture to choose one that supports 25 or 30 frames per second, or wirelessly linked video camera capable of delivering a smooth live feed. Please check the manufacturers specifications.

We recommend the use of a chroma key screen in order to realize the full potential of this software.

You may require an external microphone should the recorded sound quality be an issue.

Installing the Software

You will need to have administrator access rights in order to install this software to your computer.

- Download the software to your computer from our website; www.HamiltonBuhl.com

The download you get from the website is in the form of a standard Apple install file or dmg file.

- Double click the .dmg file to run it.

This will mount a disk image file to your computer. You will see this as a white coloured drive on your desktop and in the Apple finder, with the name I Can Present. This is a standard Apple disk image.

- Double click the installer package called I Can Present.
- Follow the on screen instructions. The software will install to your applications folder and you will be able to run and register the software.

By default, the application will be installed into the **Applications** folder.



Getting Started

1. Create your slides

Use the built-in image library or import your own backgrounds.

Add symbols, news ticker and watermark, for an 'authentic' news broadcast feel



2. Film your presentation

Film in front of a green (or blue) screen to allow the slides to appear behind the presenter

Read from the built in Teleprompter



Live Preview



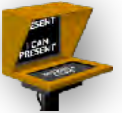
3. Finished!

Watch your presentation and share with others.



Quick Start

Launch the software by double clicking on the I Can Present application.



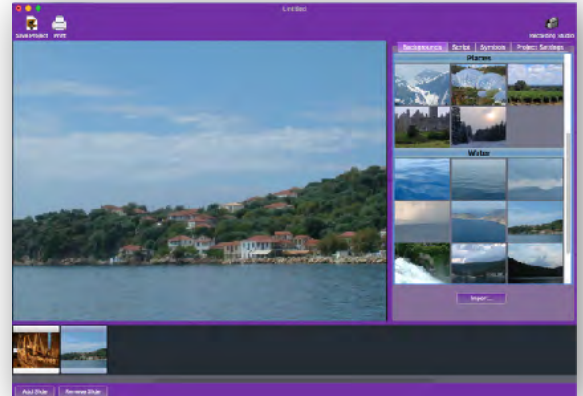
- Note: If you are intending to record your presentation straight away then it is a good idea to have your camera plugged into the computer and switched on before launching I Can Present.

The Main Window

The I Can Present main window has two different views:

- **The Slide Editor** – Create and edit slides
- **Recording Studio** – Set up and record video

I Can Present opens initially in the Slide Editor.



Getting Ready

It's a good idea to collect any picture resources you wish to use before hand. Good quality, high resolution images are preferable and will ultimately produce a better result.

You can also prepare any text you wish to use in a word processor or text editor as it can be pasted directly into your I Can Present script pages.

- Plug in your camera
- Launch I Can Present
- Import your pictures to the Backgrounds
- Select a slide in the timeline
- Click on the picture in the Backgrounds panel you wish to display.
- Select the Script tab in the tool panel on the right of the window
- Either copy and paste your script or type it in directly
- Select the Add Slide button, a new slide is added to the timeline
- Click the Backgrounds tab



- Select the next picture to insert into the timeline.
- Add the script.
- Repeat for all your backgrounds
- Select the Recording Studio button (top right)



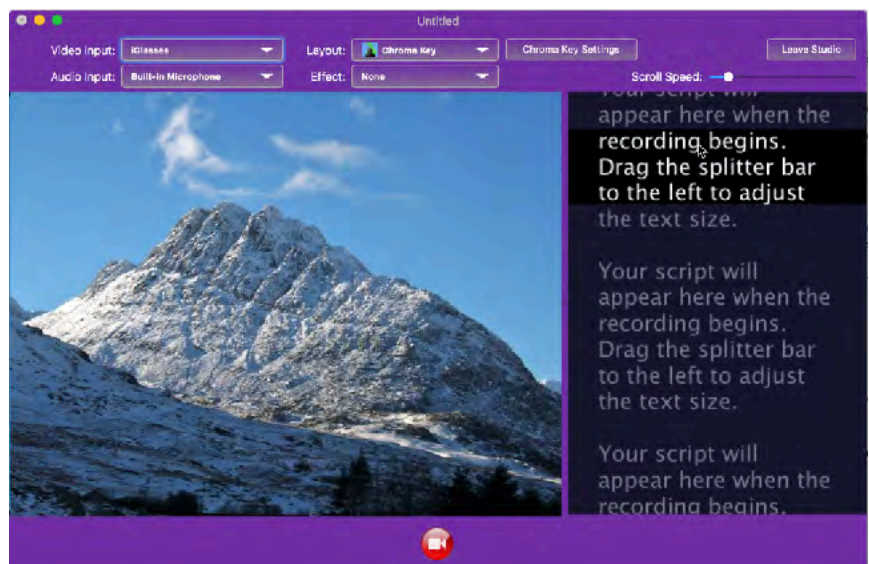
Recording

- Select the camera you are going to use from the drop down list
- Make sure the correct microphone is also selected
- Once the camera is selected, you can then choose the layout you are going to use.

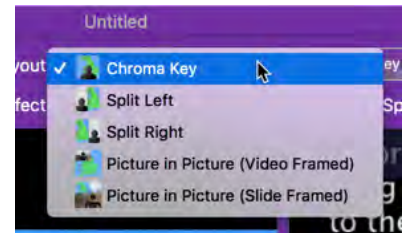
Some of the best videos are created using the chroma key or green screen feature. We deal with this in a bit more detail later in this manual, but for this example we'll just use the 'split screen' option as a green screen may not be available.

- Select the 'Split Left' option from the drop down menu.

- The video feed will appear on the left and first slide will be displayed on the right.
- Use the slider to set the scroll speed of the example text
- You can change the size of the text by dragging on the splitter bar between the script and image area of the window.



- When everything is to your satisfaction, select the record button
- You will see a 5 second countdown timer, and then you can start recording.
- To go the second slide, just click the mouse on the video or autocue window.
- Click stop when you have finished.
- The video will playback to you
- You can choose to Export at this point.



Creating and Editing Slides

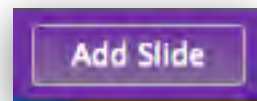
Slide backgrounds are the pictures you are going to use in the presentation. A few are supplied as examples but we'd really want you to use your own pictures.

Importing them is really easy and allows you to create a more personal presentation. You can import most types of pictures, even if they are PDF files, to use in the background.

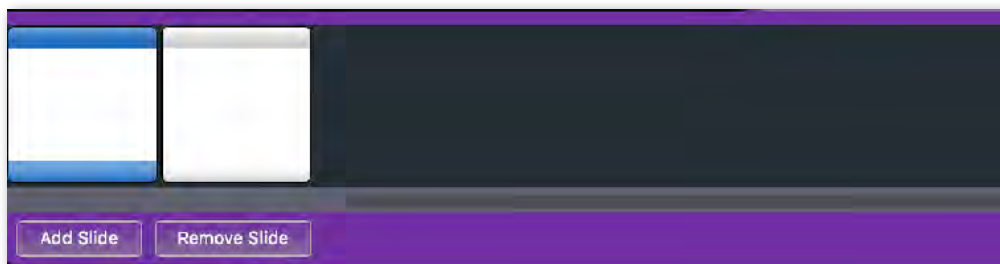
In this version you can also import PDF files into the background.

Make sure the pictures you choose to use are as high a quality as possible as these will display much better in your video presentation.

Adding Slides



By default there will be one blank slide already in the slide view. The example below has two slides and the currently selected slide has a blue highlight.



- Click the **Backgrounds** button to select the backgrounds library.
- Scroll down to find the background you wish to use.

The image you choose will be added to the currently selected slide.

- Click the **Add Slide** button to add a new slide.

A new slide is added to the timeline and automatically becomes selected. Its contents will be displayed in the preview area.

To change the background, just click on another picture from the backgrounds tool panel.

You can reorder slides in the timeline just by selecting one and dragging it to a new position.

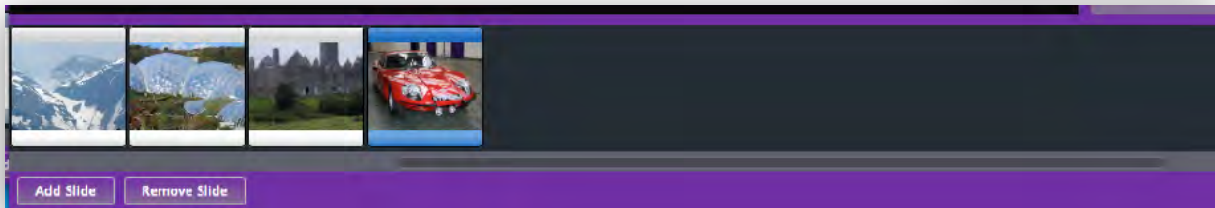


Deleting Slides

Select the slide in the timeline that you wish to delete.



Remove Slide



Either click the **Remove Slide** button or press the **Backspace** or **Delete** key. The slide will be removed from your project.

If you have made a mistake and decide that you did not want the slide deleted, then it can be easily restored as I Can Present supports multiple undo and redo. This can be accessed through the **Edit** menu or by using the keyboard shortcuts;

⌘Z : **Undo**

⇧⌘Z : **Redo**



Importing Pictures

I Can Present lets you import your own pictures to use in your presentations.

You can either drag and drop pictures onto the Backgrounds panel or Click the Backgrounds button in the Tool panel to select the background browser.

- Click the Import button.

A File Open dialogue will prompt you to navigate to the location of the picture file that you wish to import.

- Select the file in the file browser dialogue and click Import.

To ensure that your image is displayed with the correct aspect ratio in your presentation, you will need to select the region of your image that you wish to display.

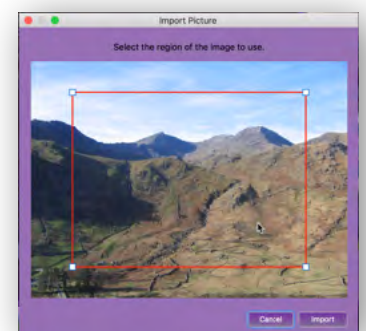
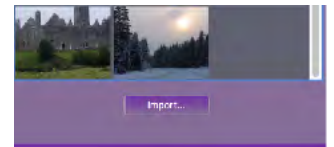
The red frame shows the area that will be used in your imported image.

Dragging the frame with the left mouse button allows you to move the frame to the region you require.

The handles in each corner of the red frame allow you to resize the area to be displayed. The aspect ratio will be maintained as you do this.

- Click Import to finish importing the image.

The image will be added to the library for this project only and will be saved with the project.

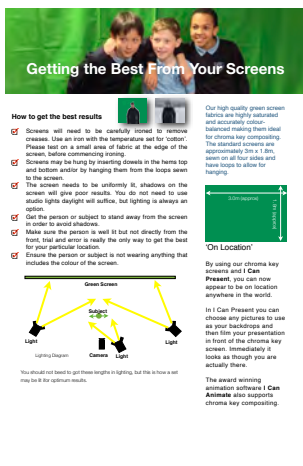
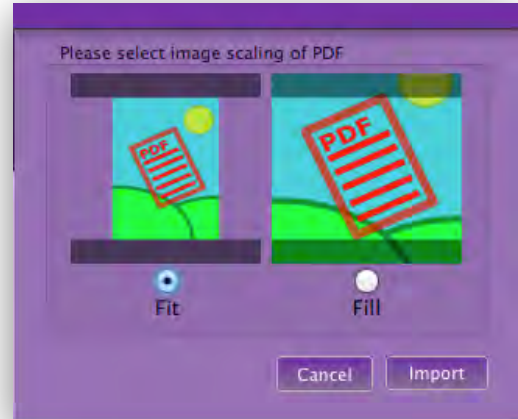


Import from PDF

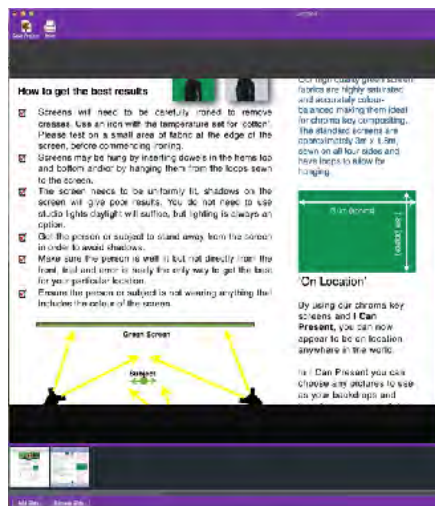
You can import PDF files to use as backgrounds for your presentation. This is especially useful as it allows you to export and use files from Keynote and PowerPoint presentations for example. Both these applications can save the slides out in PDF format and are usually slides are usually orientated landscape making them ideal for including in I Can Present presentations.

- Click the Import button
- From the browser window that now opens, navigate and choose the PDF you wish to import to your presentation.

A tool sheet opens where you can opt to either **Fit** or **Fill** the file to the slide. The results of which are shown below;



Original PDF



Fit



Fill

A new slide will be automatically created for each 'page' of the PDF that is imported.



Writing a Script



I Can Present has an inbuilt tele-prompt allowing you to enter a separate script for each slide.

Text can be entered in any language, and may also be cut and pasted from another application.

- Click on the **Script** button in the Tool panel.

An empty editable frame will appear in the Tool panel on the right.

If you have already typed your text for the slide you are creating into a word processor, then copy and paste it into the teleprompter otherwise just type directly into the script frame.

The text should contain information you are going to present for the currently displayed slide. This can be a script, questions or prompts, depending on your presentation.



Each slide can have its own script.

If you choose another slide from the Timeline, the script panel will change to display the appropriate script for the new slide.

The script will be used in the teleprompter and will automatically scroll when you use the Recording Studio. How this is controlled is dealt with in the section on the [Recording Studio](#)



Adding Symbols to a Slide

Symbols can be added to any slide and are available through the Symbols library in the tool panel.

To add a symbol:

- Click the left hand mouse button on the symbol you wish to use and drag it onto the slide.

To move a symbol:

- Click and drag it to a new location.

Some symbols will animate once they have been dragged onto the slide.

Deleting a Symbol

- Click to select the symbol and drag the symbol off the slide.

Changing the Symbol Size

The size of the symbols placed on on an individual slide can be changed.



Click on the Symbol Size slider and drag it to the right to increase the size of the symbols and to the left to decrease the size.

Some of the symbols can be edited, for example temperature. Once the symbol has been dragged to the slide, double clicking it allows you to edit the text in the symbol.

The editable symbols are Temperature, Wind Speed, Labels and UV.Editing Symbols

Editing Symbols

Some symbols can be edited, for example temperature symbols.

Once the symbol has been dragged to the preview window, double clicking it allows you to edit any text in the symbol.

The editable symbols are **Temperature**, **Wind Speed**, **Labels** and **UV**.

Temperature

- Drag and drop the temperature symbol onto the slide.

By default temperatures are displayed in degrees centigrade.



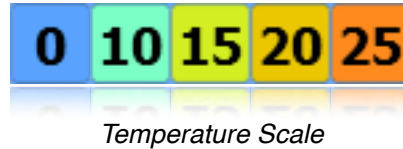
I Can Present can be [reconfigured to use a temperature range in degrees Fahrenheit](#). If installed to a computer with region set to US the display will be in degrees Fahrenheit.



Double click the temperature symbol, and type in the value you require.

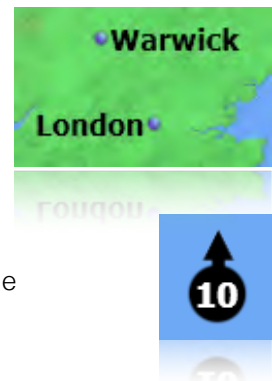


The colour of the symbol will change according to the temperature you type in.



Left and Right Justified Pin Labels

These labels have a drop pin that can be placed at a particular location. When you then double click on the label's text it will become highlighted and you can then enter the text of your choice.



Wind Speed

The wind speed symbol can be changed in a similar way to all other editable symbols.

1. Drag and drop the wind speed symbol onto the slide.
2. Double click on the symbol, you can now enter your wind speed.

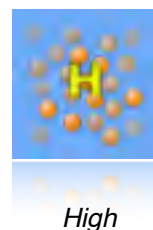
The symbol can also be rotated to show the wind direction.

3. Move the mouse pointer over the tip of the arrow, a double headed arrow will appear.
4. Click and hold down the mouse button on the direction arrow, and rotate it until it points in the required direction.



Pollen

The pollen symbol shows the level of pollen in the air. There are four levels of pollen count that you can place onto your slide.



UV Categories

The UV symbol also has an editable field that is edited in the same way as the other symbols.



This symbol also changes colour depending on the values entered.

The UV index shows the risk associated with being outside in the sun with uncovered and unprotected skin. This is normally either shown as a coloured symbol or numerical value or both.












The range for UV symbols is shown below;

Category	UVI range	Colour
Low	0 to 2	Green
Moderate	3 to 5	Yellow
High	6 to 7	Orange
Very high	8 to 10	Red
Extreme	≥ 11	Purple

It is important however to assess risk levels, that you know your skin type.

WARNING : The table below is only a guideline and you should seek professional advice on your skin type to ascertain your risk. You should always take adequate protection against damaging your skin through exposure to UV.

Guidelines for UV Risk

Index	White Skin Easily Burnt	White Skin Easily Tans	Brown Skin	Black Skin
 	low risk	low risk	low risk	low risk
  	medium	low	low	low
  	high	medium	low	low
 	very high	high	medium	medium
	extremely high	high	high	medium

[BBC Sun Index](#)



Sport Symbols

Other symbols can be used on the slides. We currently include a number of different sports symbol that can be used in conjunction with the backgrounds and other symbols.

These can be accessed by clicking on the drop down menu in the symbols library and choosing from the Sports section of the list.

Drag and drop the symbol you require onto the slide. The symbol can be repositioned on the slide by selecting it with the mouse and dragging it to the new location.



Project Settings

Settings in this panel are applied to the whole presentation and will appear in the movie and recording studio.



Show Watermark

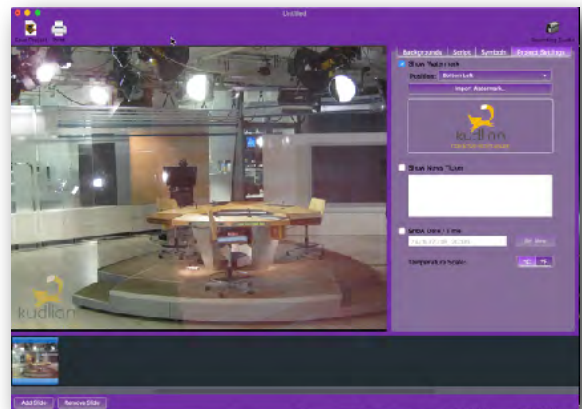
This will apply a watermark to one of the four selectable locations on your slides. The watermark is a graphic and could be a channel, group or school logo for example. It can be positioned;

Top left

Top right

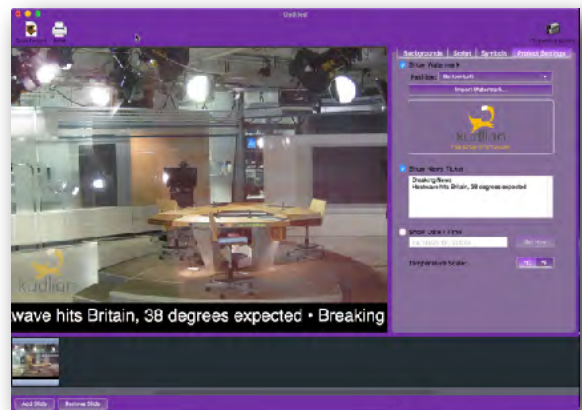
Bottom left

Bottom right.



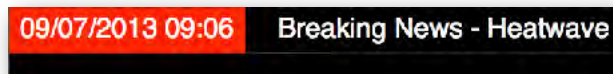
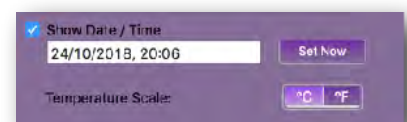
News Ticker

Selecting the checkbox to display the News Ticker will display any text you enter into this field at the bottom of the recording screen. A bullet point will separate text when you start a new line entering the text.



Date and Time

Selecting to display the Date / Time adds this information to the bottom of the screen in the recording studio. You can choose to display the current date and time by clicking on the Set Now button or type in a date, time or both, of your choice.

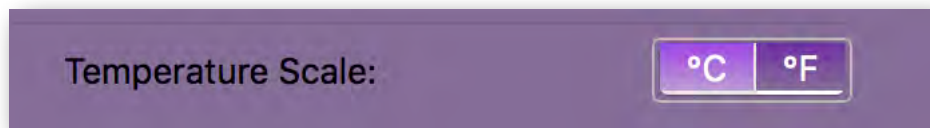


Changing the Temperature Scale

I Can Present is configured to start up using degrees centigrade, unless your computer is configured to the United States regional settings.

To change the temperature scale:

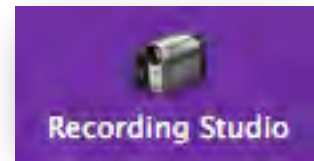
- Open the Project Settings panel.
- Choose the appropriate item to switch between Celsius or Fahrenheit.



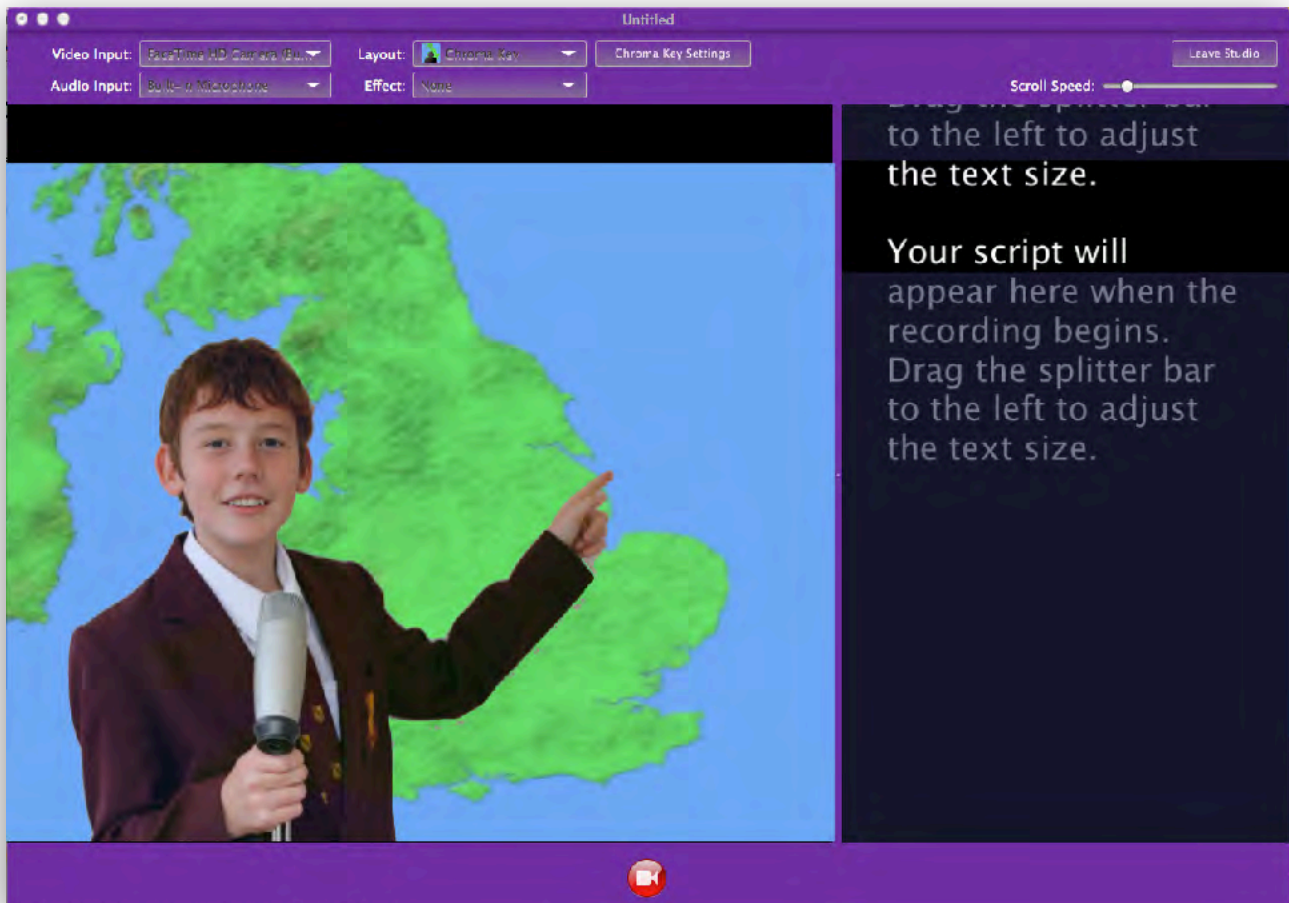
The Recording Studio

Once you have created your presentation and written your script then it's time to move to the *Recording Studio*.

Click the **Recording Studio** button located to the right hand side of in the I Can Present toolbar.



This screen allows you to set up the studio ready for you to begin recording.



Recording Studio

The toolbar at the top of the recording studio displays a number of controls allowing you to choose how the recording will be laid out. The controls depend on which devices are available, for example either a camera and/or microphone.

If no devices are available then you are reminded that a camera and/or microphone need to be selected.

If your computer has an in-built microphone/camera then these can be used to record a presentation, otherwise you will need to plug an external camera/microphone into the appropriate ports.



Supported Cameras

I Can Present should work with any Mac OS X supported USB webcam.

“What sort of web cam should I get?”

There are a number of things to consider when trying to decide which web cam is best to use with I Can Present. You are capturing real time video so a camera with a good frame rate at a high a screen size as possible is preferable. Fifteen frames per second (15fps) at 640 x 480 would be a minimum specification, preferably 800 x 600 at 15fps, would be preferable. Some of the more modern webcams offer a full 30fps at HD. You will need to check the web cam specifications on the manufacturers website. If the camera is capturing any slower than the speeds suggested here the video capture might be less smooth.

We offer a number of cameras and our website, <http://www.kudian.net>, contains details of other cameras and how to set them up.

You can also use a DV camera connected via a firewire connection or adapter. Additional hardware may be required for computers not fitted with a firewire port and you may need to install any drivers supplied with the hardware. Please cheque the camera manufacturers website.

Please note that very few USB connected DV cameras currently have the 'live feed' feature that is required for a direct connection. Some cameras may be able to use a separate video capture device, but you would need to test with the trial software

The software should detect these devices when they are plugged into the computer. They will automatically appear in the drop down lists for devices. If this does not happen you may find it is necessary to have the devices plugged in and switched on before launching the application.

You could also use the HD camera in your iOS or Android mobile to capture your presentation using a really useful free App, EpocCam. There are details in this guide on how to do this

Camera and Microphone

You can use either a good quality web camera connected to the USB port of your computer or a Digital Video (DV) camcorder connected through the firewire port. It is a good idea to have the camera connected, and if necessary, switched on before launching I Can Present.

You may also require an external microphone for good sound reproduction.

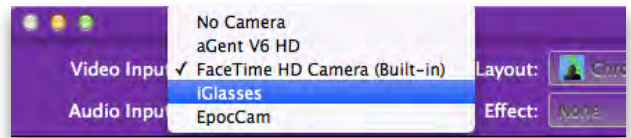
You should ensure that your subjects are well lit before starting shooting, this is especially important if you are using a [chroma key screen](#).

When you click the Recording Studio button, you will see a different toolbar at the top of the window

If the feed from the camera does not automatically appear in the preview, click on the drop down menu and choose the camera from the drop down list.



I Can Present will record in the highest quality that the camera is able to deliver and using an HD camera will give the best results however some HD webcams are unable to deliver HD at a high frame rate and will reduce the frames per second. The recorder video might then appear 'jerky'



Frames per Second (fps)

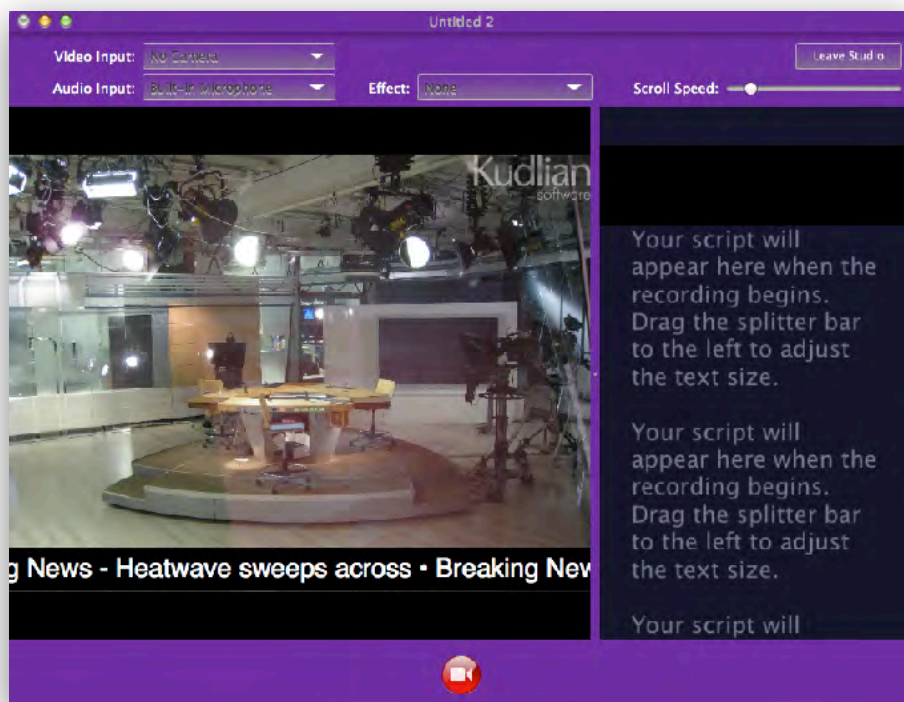
fps is a measure of how much information is used to store and display motion video. The term applies equally to film video and digital video. Each frame is a still image; displaying frames in quick succession creates the illusion of motion. The more frames per second (fps), the smoother the motion appears. Television in the U.K, for example, is based on the PAL format, which displays 25 interlaced frames per second. Generally, the minimum fps needed to avoid jerky motion is about 30. Some computer video formats, such as AVI, provide only 15 frames per second.

Early motion picture films used 18 frames per second and the current standard for movie films is 24 frames per second. A minimum of 15 fps is advised and the closer to 25fps, the better.

Microphone Only

If you do not have a camera then you can still use I Can Present to record the slides with just a voice over.

Select the microphone you wish to use from the drop down list of audio devices.

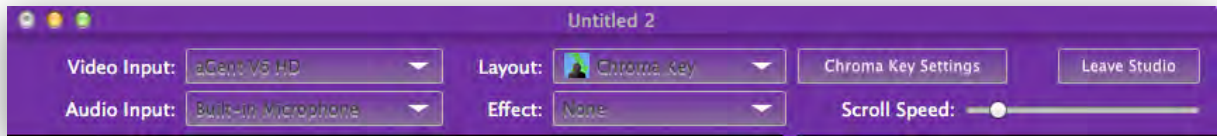


Only the audio input has a selected device



Getting Your 'Studio' Ready to Record

The toolbar at the top of the recording window is where we make changes to the recording settings.

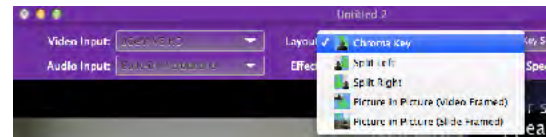


Video Input: Choose the camera to use for your recording from the drop down list. Unfortunately camera names are sometimes not the same as the model of camera, you may need to 'experiment'.

Audio Input: Choose the microphone you wish to use for recording from the drop down list. This does not have to be the microphone in the video device you are using.

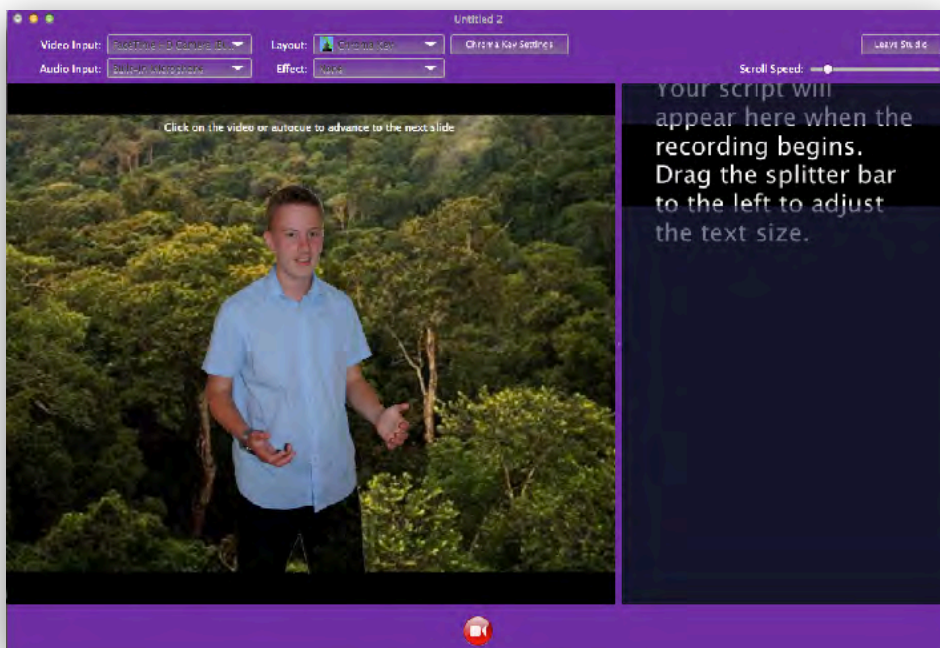
Recording Layouts

You can choose the layout of your recording from five different options, not all of them use green screen.



Chroma Key

The chroma key feature allows you to film your subject in front of a chroma key screen. The slides will appear behind the subject, creating a professional looking presentation.

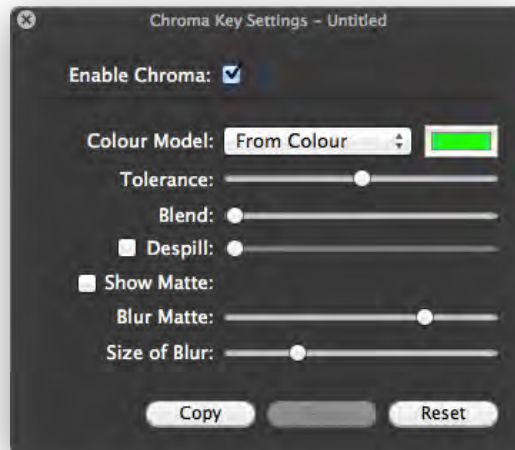


Chroma key is explained later in this guide. Unfortunately there are not a set of rules as all environments are different, but useful tips should make things easier. [Click here for more](#)



[information on chroma keying](#). I Can Present displays a real time preview of the recording with the chroma key effect. This helps you to ensure that you have the correct set up prior to recording.

- Select the **Chroma Key** layout from the toolbar
- Click on the **Chroma Key Settings** button to open the chroma key settings panel.

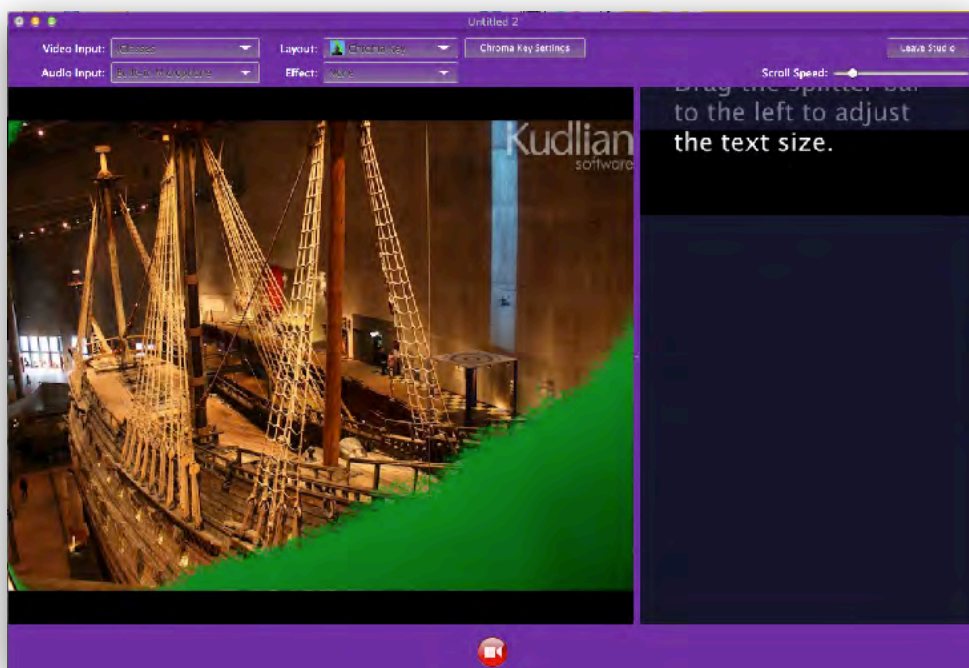


Chroma key settings

Where chroma keying is concerned, there is no easy solution such as 'press button 1,2,3 and the chroma key just works. It's a bit of trial and error, but can be very quick if you get the basics correct to begin with. [Chroma keying](#) is dealt with in its own section but let's assume you've got good lighting and are ready to continue.

There are a couple of basic settings you can alter to achieve a good key.

You may see that some of the chroma key screen is showing through as picture breakup.



The poor keying has been enhanced in this image.

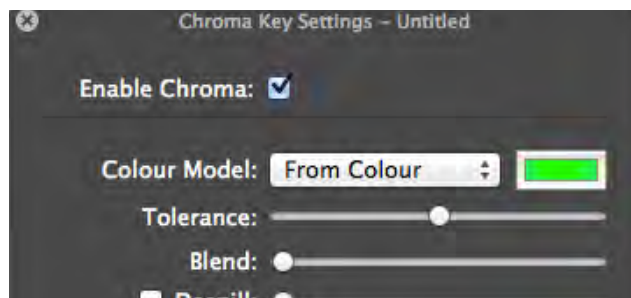


This is down to there being 'hot and cold' areas (light and dark) on the screen caused by poor lighting or shadows.

You can try to rectify this by correcting the lighting if possible to begin with. The more uniform the lighting the better. Make sure there are no large creases. The try using the **Tolerance** slider in the **Chroma Key Settings** panel.

You should try to keep the value of the slider as low as possible. If this fails to have the desired result, you can try using the colour picker to get a 'closer' match to the colour that I Can Present thinks you are using.

- Turn off the Chroma key by unchecking the option.



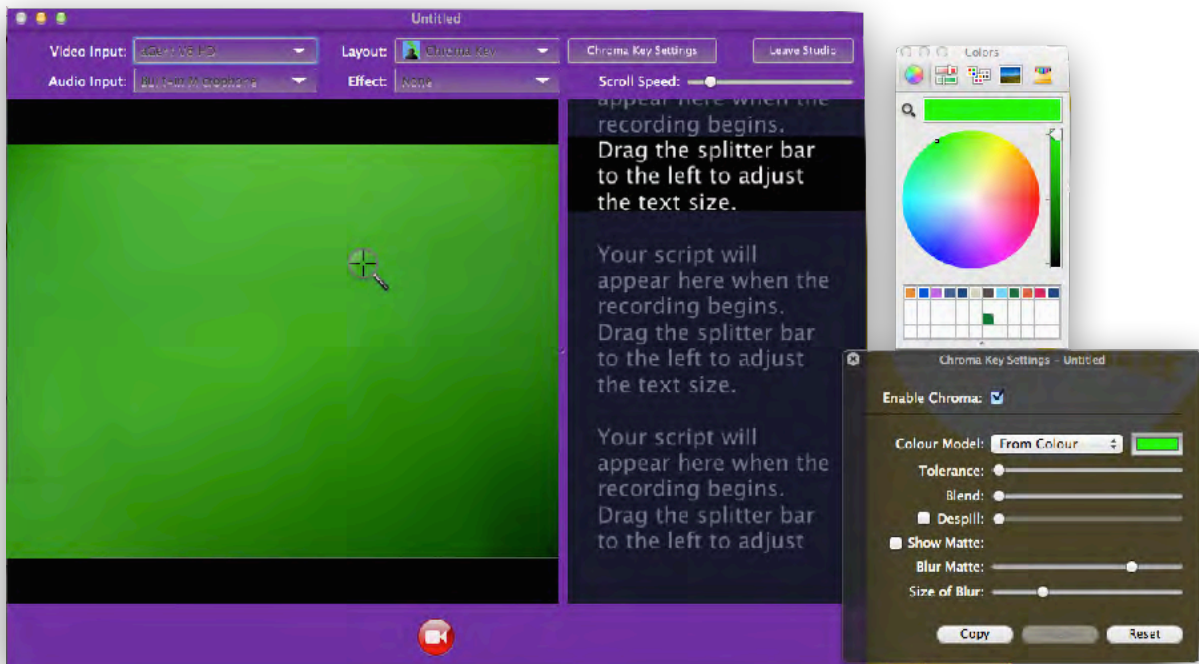
- Click on the colour well to the right of the Colour Model selection.

Apples colour picker will now appear



- Click the magnifying glass selector tool or pipette on later versions of Mac OS X
- Move the colour selection tool to an area of the green screen in the preview and click the mouse.





The colour in the colour picker will now show your choice.

- Re-enable the chroma key.

You may have to do this a couple of times, selecting a different area of the green screen to get the best key. The lower the setting of the tolerance slider the better. During this process you might need to introduce your 'subject' to ensure that they are not being keyed out, especially if they are wearing the same colour range as the backdrop! That feature can however be used in some presentations to great effect with chroma key suits, gloves, t shirts etc. In the example below the tolerance is set to high and the features of the presenter have been replaced with the background picture.



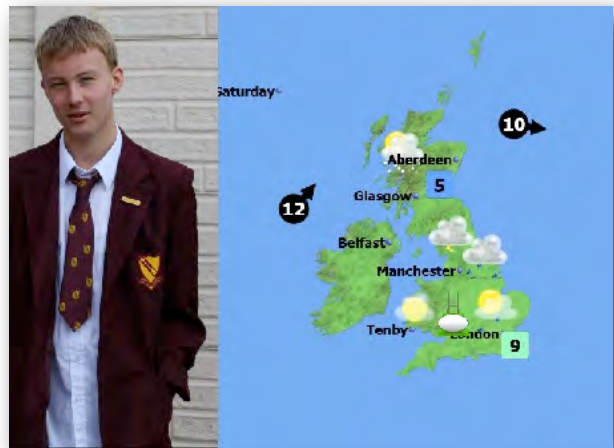
There is more information on the other settings in the Chroma Key section of this guide.



Split Left - Split Right

This option is similar to what you often see on TV when a presenter is doing an outside broadcast. In one part of the screen you have the presenter and in the other part the picture or weather forecast they are presenting about.

The split screen can be either have the video on the left or right. No chroma key is used for this setting.



Picture in Picture

This option is similar in some ways to the Chroma key option but instead of the presenter being placed fully in front of the background slide they appear in a frame or the slideshow appears in a frame. In the example below;

- The first picture shows **Picture in Picture Video Framed**. The slideshow will form the backdrop and the presenter is in a small wire frame. This can be positioned anywhere in the preview and can be resized to fill a maximum of 25% of the capture area using the handles that enclose it when it is selected.

The second example shows **Picture in Picture Slide Framed**. The video feed forms the main part of the window and the slideshow is placed inside the wire frame. Again this can be positioned anywhere in the preview and can be resized to fill a maximum of 25% of the capture area using the handles that enclose it when it is selected.

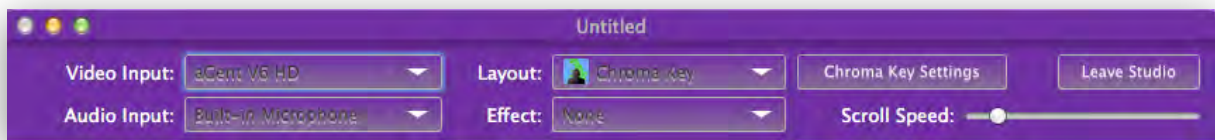


No chroma key screen is required for these features. This is ideal for using with Key Note and PowerPoint slides that can be exported and then imported in PDF format. This option can be found under the Save As menu in PowerPoint.

Once the PDF file has been saved, you can import it straight into I Can Present as explained in the section dealing with [Import from PDF](#).

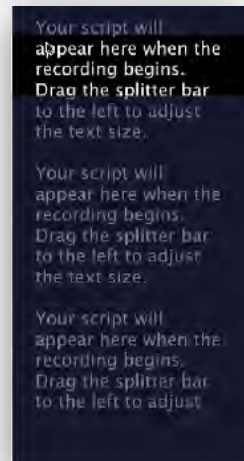


Teleprompter speed



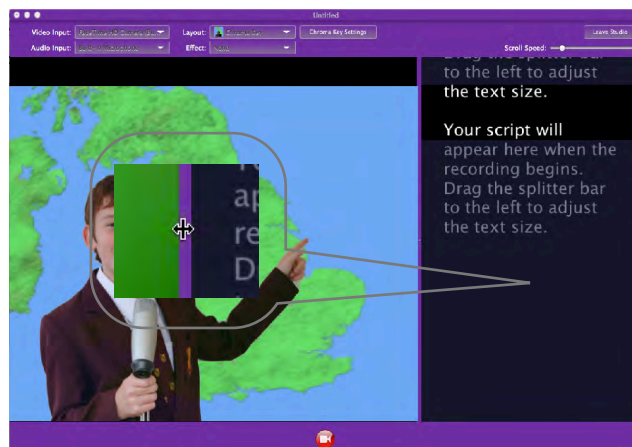
Use the **Scroll Speed** slider to adjust the speed of the teleprompter text. Moving it to the right increases the speed while moving it to the left decreases the speed.

You should alter the speed of the scrolling text until you can comfortably read it as it appears in the rectangular box towards the top of the window.



Changing the Size of Text

Between the text area and the video preview area is a purple splitter bar. Position your mouse anywhere on this bar and you will see the pointer changes to a double-headed arrow.



Hold down the left hand mouse button and drag the splitter bar, to either the left or right to adjust the relative sizes of the preview and the text in the tele-prompt.

This allows you to set the font size of the text to a comfortable size for reading.

This does not affect the size of the exported movie.

Effect

The effects button opens a menu that allows you to apply either a black and white or sepia filter to your video.

Leave Studio

Clicking this button returns to the setup window.

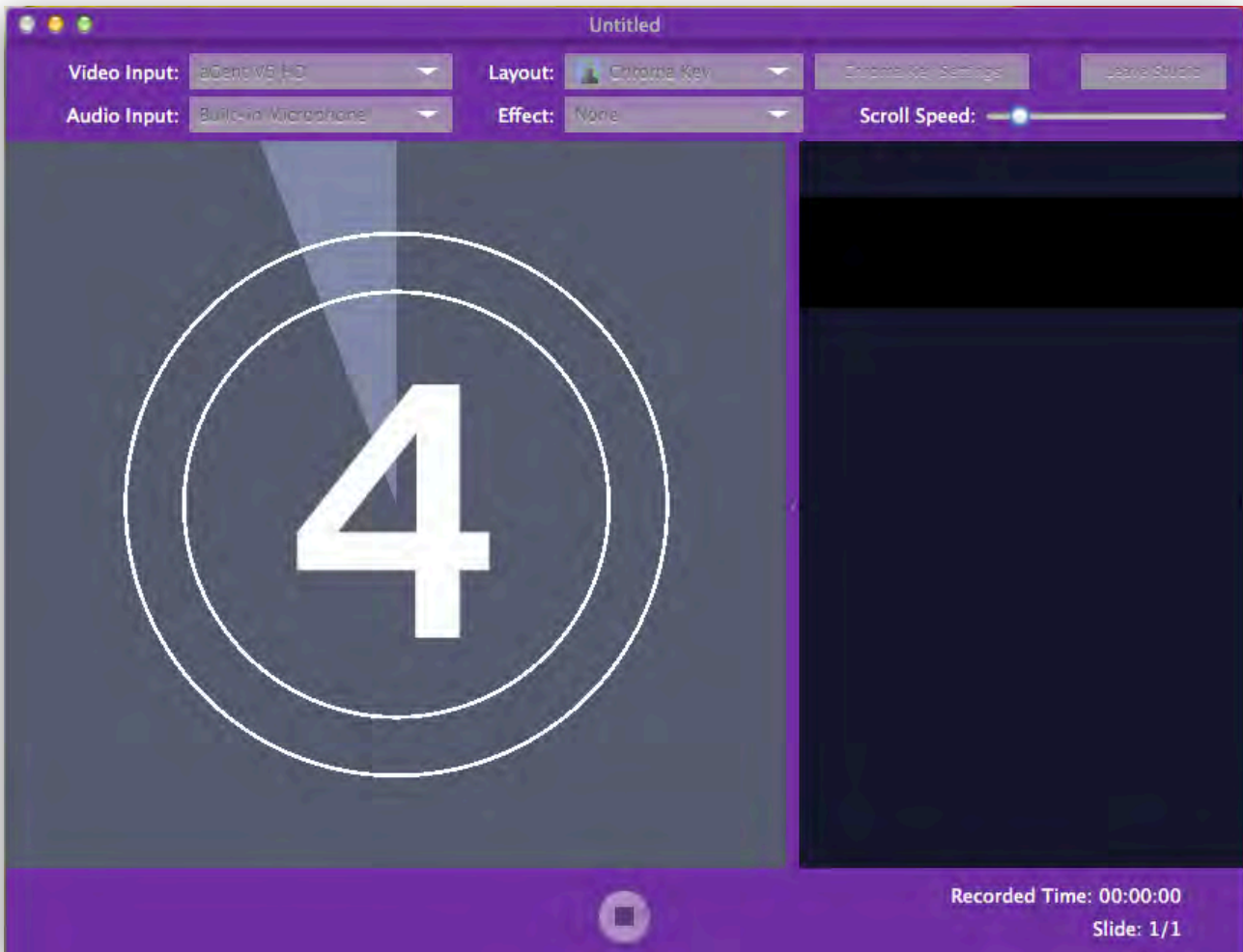


Recording

Everything is set and you are ready to record.



1. Click on the red record button at the bottom of the window to begin recording.
2. The countdown timer will begin counting down from five to zero so that you can be ready to start your presentation.



Countdown Timer

Your first slide will appear in the preview and alongside it the script. The script will scroll up the right hand side of the screen.

As the script enters the target box near the top, begin speaking. When you get to the end of the script for the first slide the script prompt will stop and will not continue on to the next slide until you press the left hand mouse button. The mouse pointer must be in the preview window

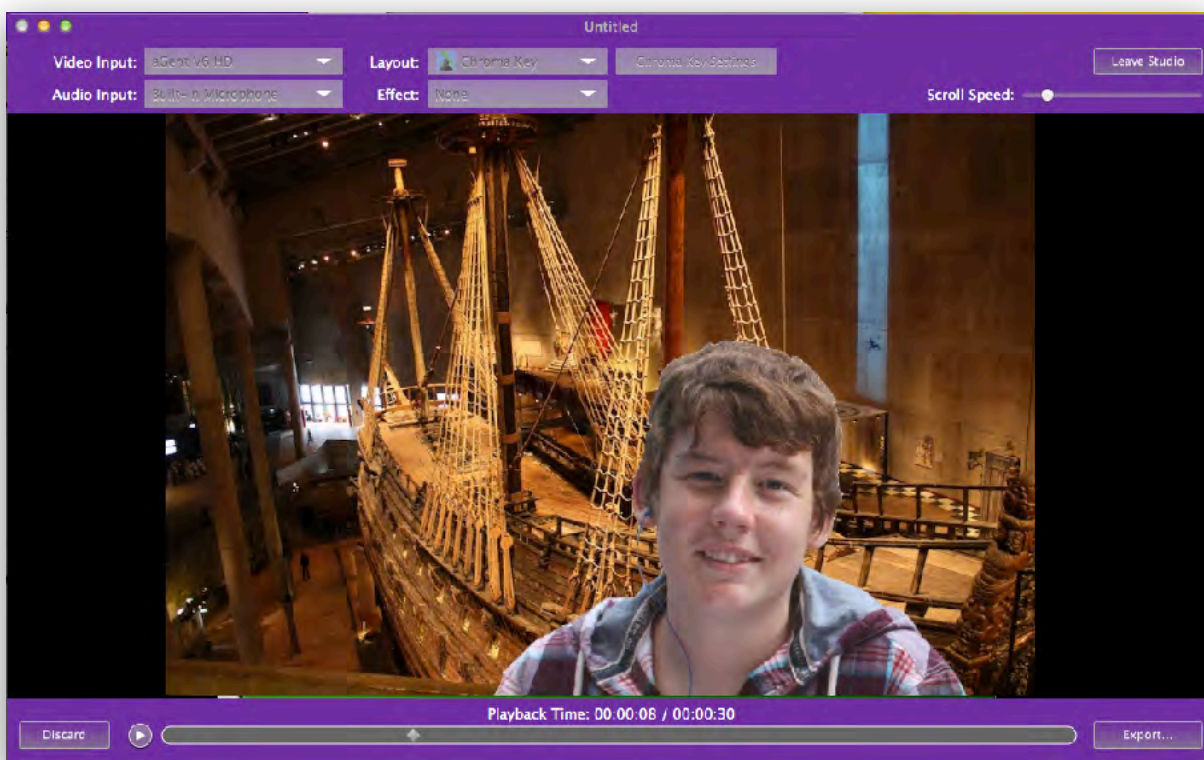
When the left hand mouse button is pressed the presentation will continue to the next slide and the script for this slide will now begin to scroll up into the grey target box. You will need to do this for each slide.

At the end of the presentation, press the **Stop** button.



Playback

The Movie you have captured will be played back straight away.



Once viewed, the presentation can either be Discarded, in which case you will go back to the Recording studio to reshoot your presentation or you can choose to Export your presentation by clicking the Export button.

Discard

Exporting a Movie

I Can Present exports movie files either as [M4V](#) movies or directly to iTunes and iMovie.

Export...

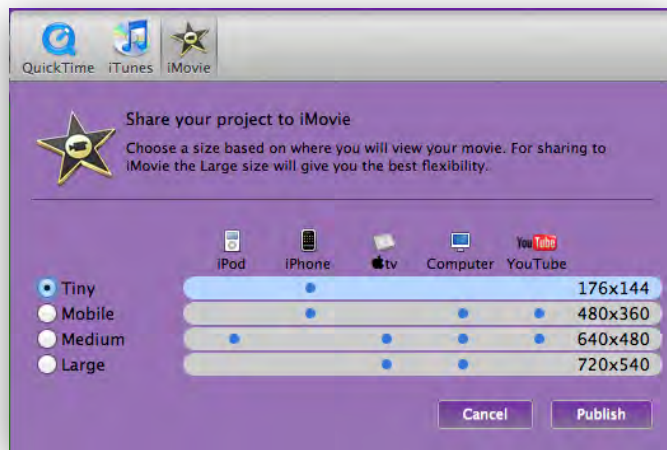
**iMovie 10 and later, now longer allows us to export directly to the application from this version of I Can Present, however, the file is exported to the I Can Present folder in your previous iMovies folder. (this will be created if it has been deleted. You can then either import it into iMovie in the normal way or apply the Update projects option from the File menu in iMovie 10. For more information please go to Appendix III or visit;*

<https://support.apple.com/en-gb/HT202853>

To export your movie:

- Click the **Export** button.
An export sheet will appear as shown:





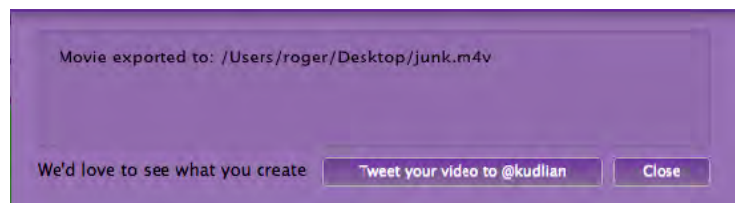
- Click on the application where you wish to send your movie.
- Choose a size of movie that you wish to export. If you are sending to iMovie then you should choose **Large** as this gives you the best resolution for editing. You can choose to export at a smaller size from iMovie after editing.
- When you have made your choices, click on the **Publish** button. If you have chosen to export as a QuickTime MPEG Movie then a file save browser will open and you will need to enter a file name for export. Once you have done so, click the **Export** button.

The movie will then automatically start to export to the selected application. If you share to iMovie, then you need to ensure that iMovie is not already running as iMovie only searches for new clips when it starts.

The export progress box will open showing the progress of the movie export. Generally we have found that the export process takes up to the same amount of time as your recorded movie and the file size is around 12Mb per minute.

For example; a typical 2 minute presentation will take up to 2 minutes to export depending on the speed of your computer with a file size of around 25Mb.

When the export has completed, you can choose to **Tweet** your video to us, as we would love to see them, or just close the dialogue window and return to the **Recording Studio**.



Saving an I Can Present File

You should save your project files regularly whilst creating it.

Each project file saves the details for each slide, the background used, the symbols and their positions as well as any script.



Note: the project files do not save any recorded video as this would make them very large.

- Choose **File > Save** from the menu bar.

Alternatively you can use the keyboard shortcut **⌘S**.

A **Save As** dialogue will open allowing you to choose the location to save and name the file.

I Can Present files have the file extension **.ksicp** and can only be used by the I Can Present application for further editing. The I Can Present files are compatible with our PC version of I Can Present.

Opening an I Can Present File

Either:

- Load the I Can Present application.
- Either choose **File > Open...** or use the **File > Open Recent** submenu to choose a recently saved file.
- If you select **Open...** a file browser window will open allowing you to navigate to and select the file you wish to use.
- Highlighting the **Open Recent** option presents a list of files that have recently been saved from I Can Present.
- Select the file you wish to open from the list.
- It will then load into I Can Present and you can continue working.

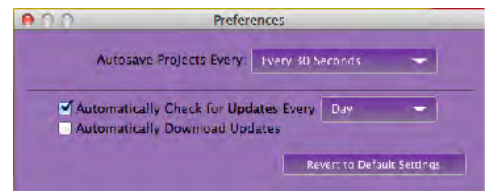
or

- Double click on the I Can Present file. The I Can Present application will launch and then load the chosen file.



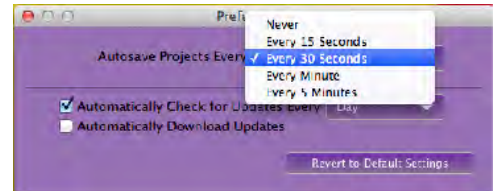
Preferences

Preferences are accessed through the **I Can Present/Preferences** menu or the keyboard shortcut **⌘,**



Autosave

Once a project has been saved you can set the Autosave feature to ensure that you do not lose your project should there be an issue with your computer. The default is every thirty seconds.

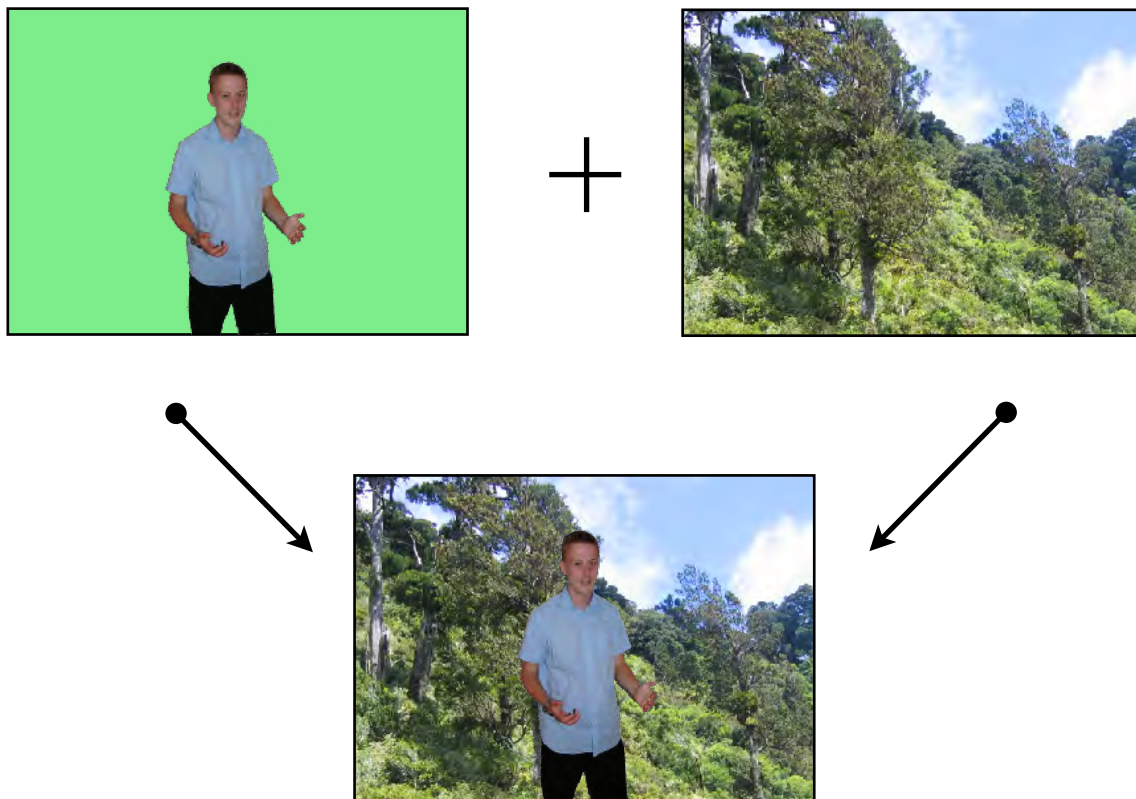


Check for Updates

You can also check for and download updates and again set when you wish this to be undertaken.



Chroma Key Explained



Chroma keying is a technique for mixing two images together, in which usually a single colour from one image is removed, or made transparent, revealing another image behind it. The technique is also known by other names, green-screen, blue-screen, colour keying and colour-separation overlay. Used extensively in the film industry for special effects, it is also seen everyday, such as in weather forecast broadcasting. The presenter appears to be standing in front of a large map, but in reality they are stood in front of a large blue or green background in the studio. Different weather maps are added on those parts in the image where the colour is blue or green. Blue and green are considered the colours least like skin tone. I Can Present has been designed to allow the user to choose any colour to key against.

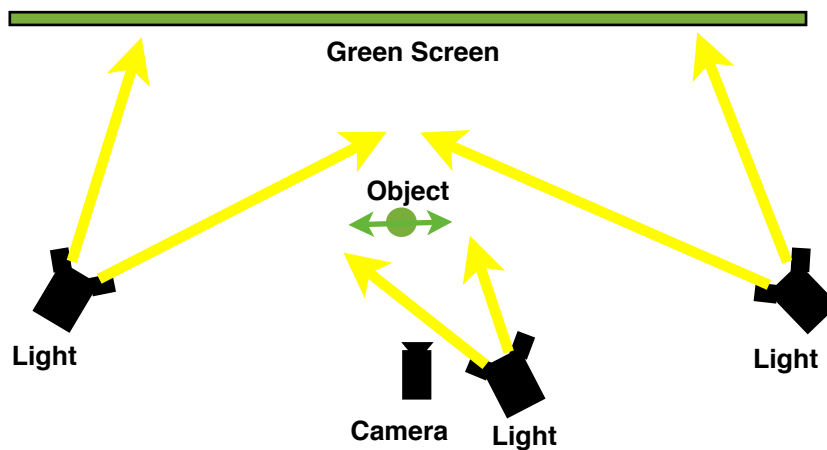
The illustration demonstrates the effect that can be achieved.

In reality the choice of chroma color is dependent on the colors used in the presentation you are shooting. For example if you are filming 'presenters wearing green, using a green screen would mean that they too would disappear when the chroma key filter is applied. Mind you that could be fun!

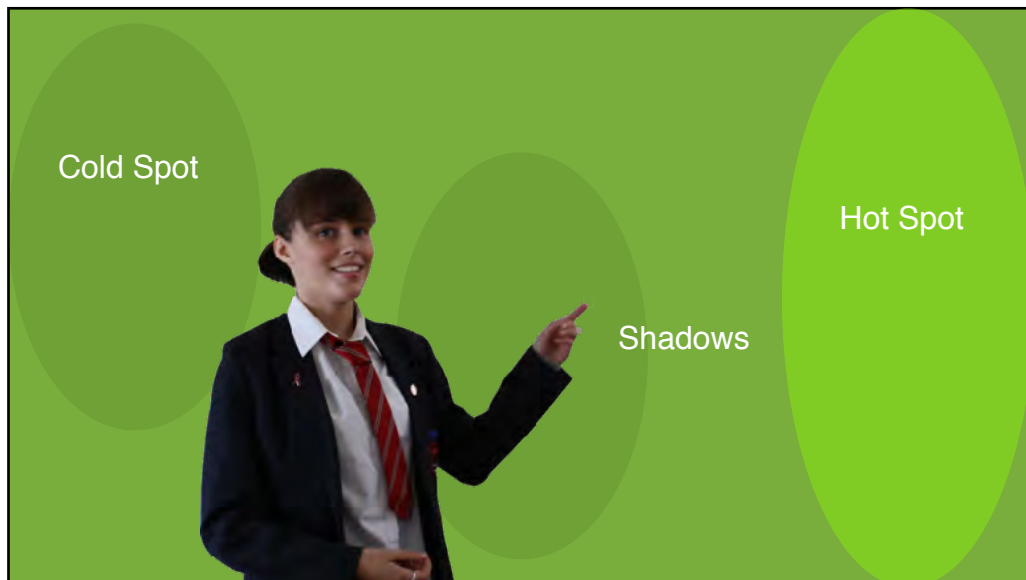
For the purposes of this guide we will refer to it all as green-screen.



Lighting



The biggest challenge when setting up a green-screen is getting the screen evenly lit and to avoid both shadows and *hotspots*, (areas which are brighter than the rest of the screen). An evenly lit screen gives a narrow colour range to be replaced, resulting in much more accurate keying. If you have shadows, it would present itself as a darker colour to the camera and might not register as part of the matte.



When choosing a chroma key screen, try to use materials which are not shiny. A shiny surface will have areas that reflect the lights making them appear too bright. It is better to choose a matt surface as this will diffuse the reflected light better and have a more even colour range.



Colour Models

I Can Present uses four different methods for calculating which colours should be used as the chroma key mask. These are:

- Red
- Green
- Blue
- From Colour

The default setting for the colour models is **From Colour**.

Red, Green or Blue

These models all work in effectively the same way for each of the respective colours. If you know that the background is one of these colours then you can just select this colour model without having to keep using the colour picker.

Advantages:

- Is easier to use; you don't have to manually select the chroma key colour and is less time consuming.
- Maybe faster on older computers.

Disadvantages:

- The chroma key colour must be either red, green or blue and for best results the chroma key background has to be lit correctly.
- Not good for screens that are creased, or poorly lit.

From Colour

This method requires you to use the colour picker to pick the background colour from the preview.

Advantages:

- You can choose any colour you wish for the chroma key.
- Can give substantially better results.

Disadvantages:

- You need to manually select the colour using the colour picker.
- Maybe slow on older computers.

Once you have chosen the colour model suitable for your screen, use the **Tolerance** slider to increase or decrease the size of the matte.



Chroma Key - More Settings

You may find that some areas of the subject have disappeared or that some areas of the chroma screen are still visible.

This can happen because;

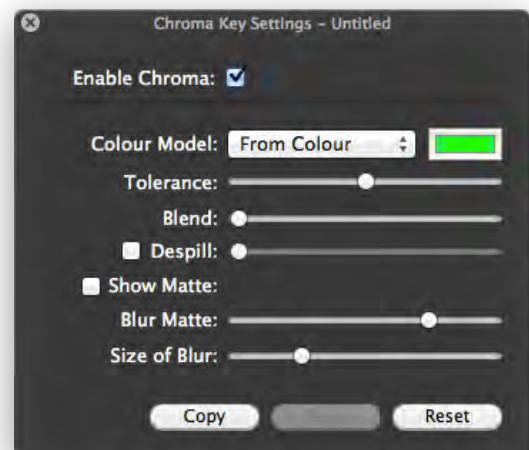
- The colour chosen for the key is also present in the foreground subject.
- The colours in the foreground are *very close* to the one you have chosen to use as a key.
- Or, as we have previously mentioned, lighting is poor.

I Can Present has a control panel that allows you to try to get the best key for the subject you are using. Earlier we mentioned that the Tolerance slider can be used to great effect, but there are a number of other settings that you can control. We'll remind ourselves of the tolerance slider to begin with;

Tolerance

This slider enables you to set a tolerance for the chroma key colour. Ideally you will want to set this to be as low as possible, whilst ensuring that all the background screen has disappeared. If you set it too high you may find that some of your foreground subject starts to disappear too.

If you need to set it very high it is probably because your chroma key background is not evenly lit.



Blend

The **Blend** slider enables you to smooth off the edges of your foreground subject eliminating some of the jagged edges around the foreground subject.

To get a better idea of this try selecting the **Show Matte** check box. Then drag the Blend slider up and down and you should notice the edges becoming slightly blurred. Remember to turn off the Show Matte check box to view the preview again.

Despill

One of the problems filming in front of green or blue screens is that the green light reflected from the screen can effect the foreground objects. This can often be seen as a green tinge around an object or reflections in shiny objects. Objects that do not have a clearly defined edges, such as a person's hair, can be particularly affected; these become blended with the green, we call this *spill*.

There is another issue which you might notice and that is *glare*. If there is a lot of green light coming into the lens of the camera it can reflect internally in the lens and can cause the whole image to have a slight green tinge, Despill will also remove this tinge.



To try to remove the spill I Can Present uses a very effective system controlled by the Despill slider.

Try experimenting with the slider to see the effect. One of the downsides however is that when you drag the slider over to the right then the colour balance of the foreground image will change.

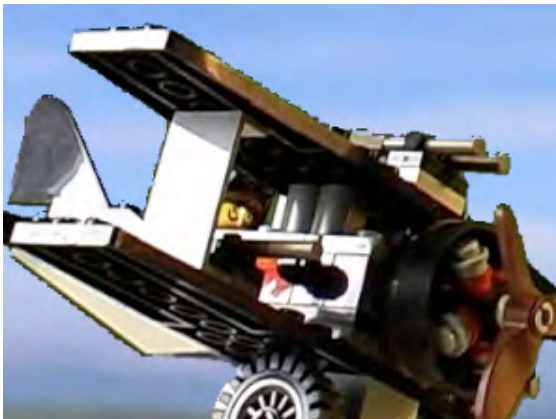
Although Despill can be very effective, there is this side effect of changing the colour balance of the image. In many cases this is either not noticeable or you will find that the issue is far outweighed by the improvement of spill in the foreground subject.

Should you require further details on Despill, then an excellent guide is [Digital Compositing for Film and Video by Steve Wright – Focal Press](#)

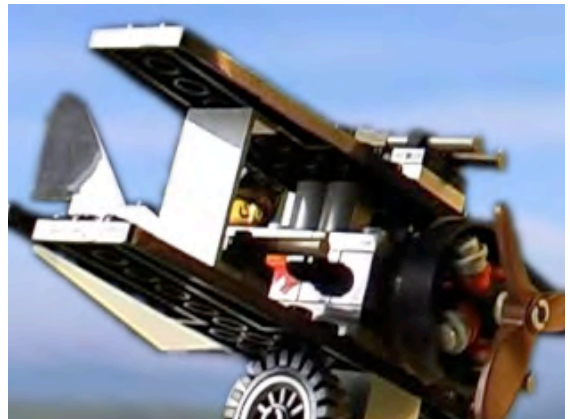
Blur the Matte

Despite having the blend facility when pulling the matte, I Can Present also offers the feature of *artificially* blurring the matte too. This can make the edge around the foreground subject blend much better into the background. Using the **Blur Matte** and **Size of Blur** sliders, a better blend can be obtained around the edges of the foreground subject.

Blur Matte controls how *intensely* the matte is blurred and the size of the blur determines sets the blur radius, i.e. how *big* is the blur. In the example below, the object has 'Blur' applied to soften the edges.



Without Blur



With Blur



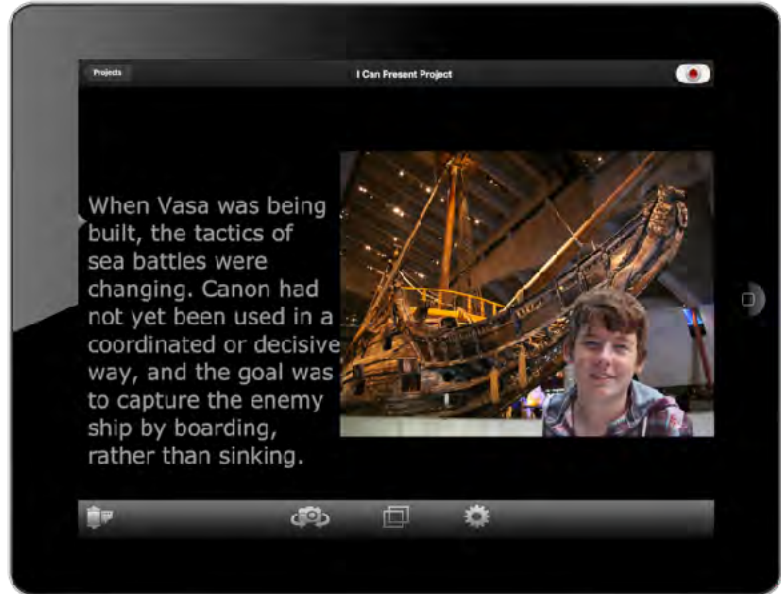


I Can Present Mobile

You can now get I Can Present for your mobile device iOS (iPad) and Android. It's a great addition to supporting this version giving you flexibility to undertake an interview or presentation using the mobile device and incorporating it with your presentation.

The following page has a pocket guide that you can print out and fold for reference.

We've placed a video on our website showing you how to fold this useful guide and a link to download the PDF directly. You'll find it in the I Can Present section.



iHelp I Can Present How to use Guide #1



Open I Can Present using this icon.



On the first screen, which is black and called projects, tap the plus sign in the top RH corner.

Top Tip: Make Sure access to your camera roll is switched on for I Can Present in the privacy settings for Photos.



Position
Position your iPad so the camera is on the Left Side Landscape position.



Press the camera icon to see the view change



Customise
By touching the overlapping rectangles on the lower toolbar, experiment with 4 settings you might use when recording.



The cogwheel icon gives access to the speed of the teleprompt, variation as to font, size and colour plus contrast with background

View
Wait until you see the following information message:



To see your film, touch the film reel in LLHC to bring up the camera roll. Touch the video you want to watch. Press done on the camera roll when finished.

Text
Tap the text on the right side and type 'Hello my name is...'



Click done at the top right.

Record
Set the camera so that your face is visible.
Press record button in top right, wait for the countdown and read your text.



Press record button to stop.

Appendix I

Using a Mobile Device as the Camera

You can use the HD camera in your mobile device to capture your presentation using a really useful App, EpocCam*. Please refer to the EpocCam website for the latest updates and software.

HERE'S HOW YOU DO IT:

ON YOUR MOBILE;

Go to the Apple App store and search for EpocCam*. Download and install the App to your mobile device.

ON YOUR LAPTOP OR DESKTOP;

Download and install the Mac OS X drivers from <http://www.kinoni.com/osxdrivers> (Mac OS X requires 10.6 or later)

Both your Mac computer and iOS device must be connected to same WiFi network.

Start the EpocCam application on your iOS device.

Start I Can Present

EpocCam will appear in the list of cameras available to the Application.

Select EpocCam, from the camera list in I Can Present and the mobile will now try to connect to the desktop computer. This may take a few seconds.

Soon you should see video feed appear in the applications Camera options. You can find further information here;

<http://www.kinoni.com>



TROUBLE SHOOTING

WIFI CONNECTION DOES NOT WORK

Check you firewall settings. Your firewall application can block the traffic between PC and phone.



If you are using third party firewall software like Norton or F-Secure you need to configure them to allow Bonjour-service traffic on UDP port 5353. Also allow 'KinoniSvc' to accept in- coming connections to TCP port 5055.

*EpoCam is a third party application, with no technical support for it.



Appendix II

Links to Support Resources and Updates

[I Can Present – Support Resources and Updates](#)

The following web addresses may prove to be useful. We cannot guarantee that they are still active as web addresses change over time.

[The Met Office](#)

[EUMETSAT](#)

[BBC Weather](#)

[GMTV Weather](#)

[metcheck](#)

[AccuWeather.com](#)

[netweather.tv](#)

[Mountain Weather Information Service](#)

[MeteoGroup](#)

M4V Files

The M4V file format is a video container format developed by Apple and is very similar to the MP4 format.

M4V files may optionally be protected by DRM copy protection.

An M4V file can be renamed to the more common extension of MP4 to be played on other media players if it is not protected content.

Acknowledgements

Apple, Mac OS X, iOS, Android, Keynote, Microsoft Windows, Microsoft PowerPoint, and Adobe PDF are trademarks, all trademarks are acknowledged.



Appendix III

Update projects and events from previous versions of iMovie in iMovie (2014)

I Can Present is still using the old iMovie folder structure so when files are exported to iMovie, you should find an I Can Present folder within the iMovie Events folder in Movies.

Movies/iMovie Events/I Can Present

You should be able to run the 'Update projects and Events' option from within iMovie, or just import the video file in the folder in the normal way to iMovie. The title of the file you have saved will be:

Untitled followed by the date eg Untitled 11-15-18.m4v

so its a good idea to save and name your project before recording and exporting.

If you've ever used an earlier version of iMovie, when you first open iMovie (version 10.0 or later), you're asked to update your existing iMovie projects and events.

After you update your projects and events, copies of the original iMovie Projects and iMovie Events folders are left in place. The files in these folders can still be opened by previous versions of iMovie. If you don't want to use these files in the future, delete the folders.

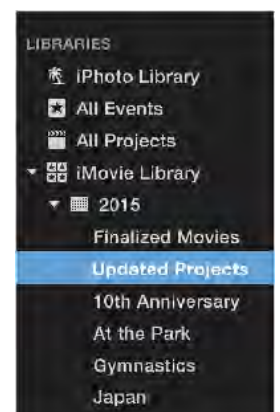
To update projects and events on external drives

1. *Verify that the iMovie Projects and iMovie Events folders are stored on the top-level of the drive.*
2. *Open iMovie.*
3. *Choose File > Update Projects and Events.*

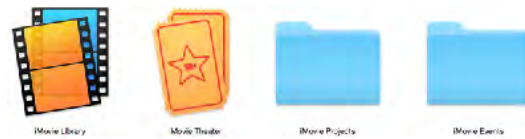
After the update

After you update, your projects and events are placed in a new library, which you can see in the iMovie sidebar.

- Your updated projects are in the Updated Projects event.
- If you previously shared or finalised any of these projects, those video files will appear in the Finalised Movies event.



In the Finder, an iMovie Library file is created alongside your original iMovie Theatre, iMovie Projects, and iMovie Events folders.



The files in these folders can still be opened by previous versions of iMovie. If you don't want to use these files in the future, delete the folders. [Learn more about.](#)

To update later

If you choose Update Later, you can update projects and events by following these steps:

1. Open iMovie.
2. From the menu bar, choose File > Update Projects and Events.
3. Click Update in the dialog that appears.

© 2016 Roger Young MSc

