



# Instruction Manual

## Hydroponic Grow Light System

Model # HGLITE



### Product Registration Instructions

1. Click on Customer Care
2. Click on Product Registration Form
3. Please fill out all fields marked with \* to register your product

### Warranty:

Warranty begins the date item ships from our warehouse. All products have a one year warranty from original date of shipment, unless otherwise noted.



80 Little Falls Road • Fairfield, NJ 07004

1-800-631-0868

[www.hamiltonbuhl.com](http://www.hamiltonbuhl.com)



# Table of Contents

Product Overview . . . . .	4
Quick Start (Standalone Set-Up) . . . . .	5
Quick Start (Combination Set-Up) . . . . .	6
How to Use . . . . .	8
Tips . . . . .	15
Warranty . . . . .	16

## Product Overview

### Included:

Hydroponic Unit  
 Power Supply (48W)  
 Planting Bed A (2 pcs.)  
 Planting Bed B  
 Planting Bed C  
 Seed Box  
 Sponges (30 pcs.)  
 Planting Basket (30 pcs.)  
 Tweezers  
 Measuring Cup  
 Planting Hole Caps (5 pcs.)

### Additional Accessories Sold Separately:

Sponges  
 Planting Baskets  
 Planting Hole Caps

### For Connecting Multiple Units:

Power Supply (240W)  
 Connecting Plate and Connecting Cable Set

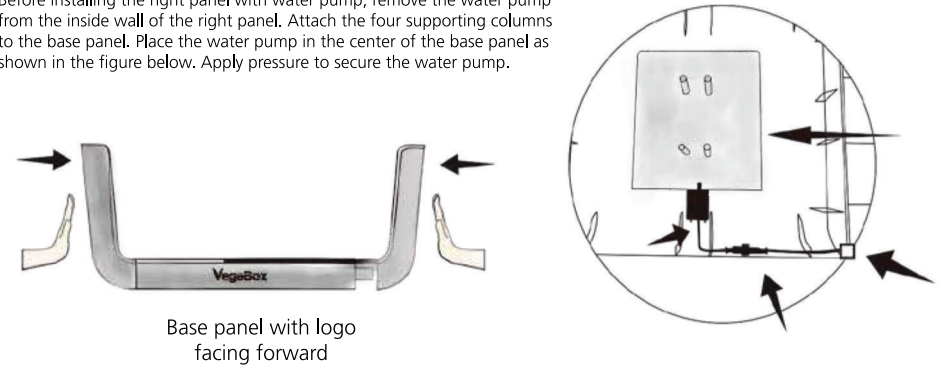
### Not Included:

Type A Nutrients  
 Type B Nutrients  
 Seeds



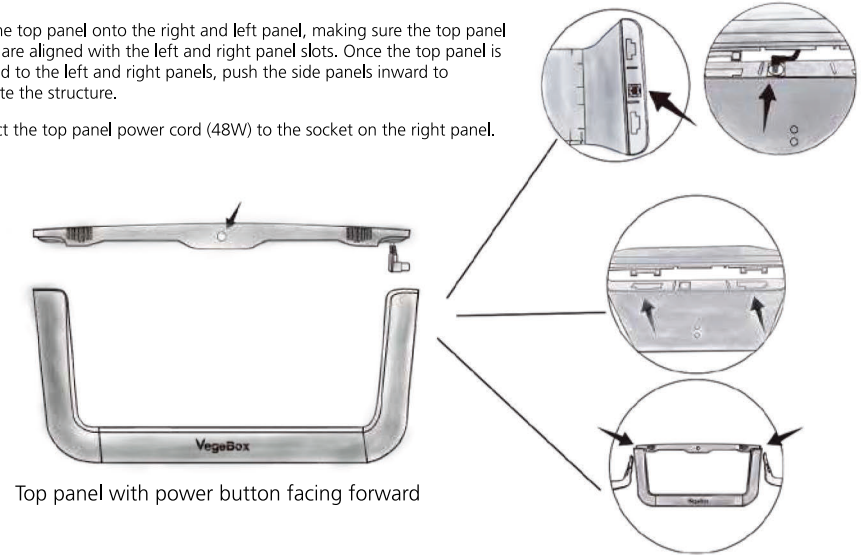
## Quick Start Guide (Standalone Set-Up)

Before installing the right panel with water pump, remove the water pump from the inside wall of the right panel. Attach the four supporting columns to the base panel. Place the water pump in the center of the base panel as shown in the figure below. Apply pressure to secure the water pump.

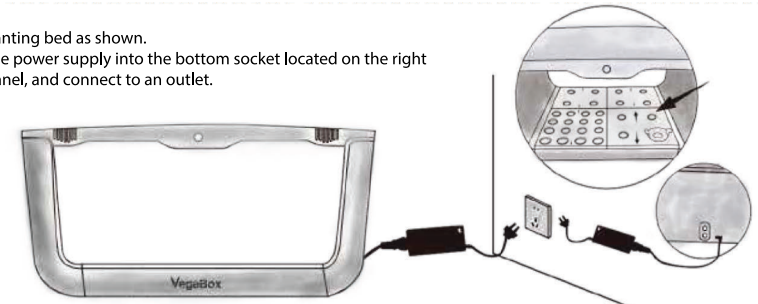


Place the top panel onto the right and left panel, making sure the top panel clamps are aligned with the left and right panel slots. Once the top panel is attached to the left and right panels, push the side panels inward to complete the structure.

Connect the top panel power cord (48W) to the socket on the right panel.



Install the planting bed as shown. Then, plug the power supply into the bottom socket located on the right side of the panel, and connect to an outlet.



## Quick Start Guide (for Stacking Multiple Units)



Hydroponic Unit



Connecting Cable  
(sold separately)



Power Supply (240W)  
(sold separately)



Connecting Pad  
(sold separately)

### Step 1

Place the hydroponic unit on a stable surface.



### Step 2

Place the connecting plate on top of the bottom unit.



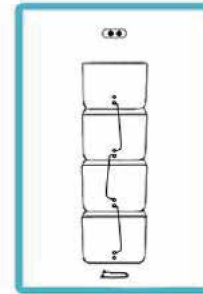
### Step 3

Place the second unit on top of the bottom unit's connecting plate.



### Tip

From the bottom up, connect from the top.

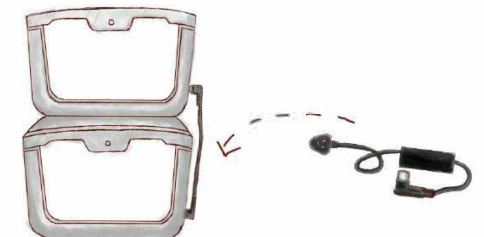


### Step 4

Connect the power supply (240W) to the bottom socket on the first unit.

### Step 5

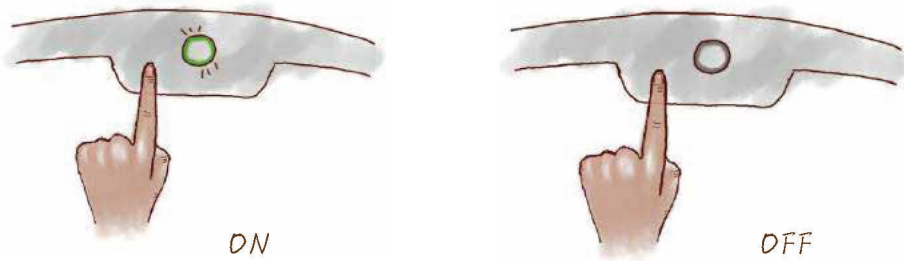
Insert the connecting cable into the top socket on the first unit, then connect the other end of the connecting cable to the bottom socket on the second unit. Repeat this step for additional units (maximum of 4 units).



### Step 6

Plug the power supply (240W) into an outlet.

## How To Use

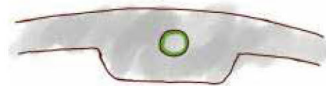


1. Press the power button once; the green light will begin to flash indicating the unit is on.
2. Press the power button again; the light will turn off indicating the unit is off.

## Light Indicators



**No Light**  
Unit is off.



**Solid Green Light**  
Unit is on and water level is sufficient.



**Flashing Green Light**  
Unit is on and water level is low.



**Alternating between Green and Blue**  
Unit is on and water pump is draining water.

## Draining the Water



To drain the water out of the base, connect an 8mm tube (not included) to the water outlet on the water pump.

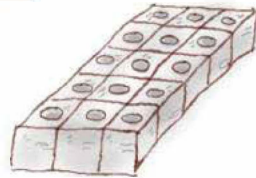
1. When the unit is powered on, press and hold the power button for 3-5 seconds. The LED light around the power button will begin alternating between blue and green and the water pump will begin draining water out of the base.
2. Draining will automatically stop when the water level falls below the pump's intake. The pump can also be stopped manually by pressing the power button.

The rest of the water in the base can then be cleaned out with a towel.

## Step 1 – Sowing



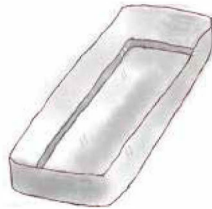
Seeds



Sponge(s)



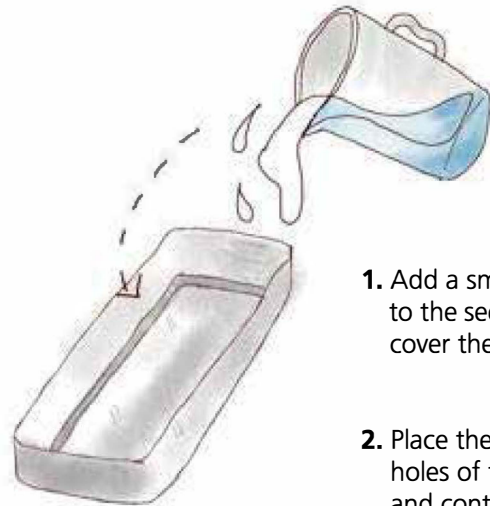
Tweezers



Seed Box



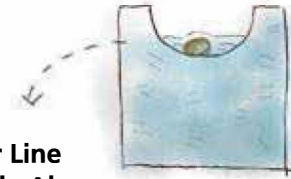
Water



1. Add a small amount of plain water to the seed box, just enough to cover the bottom of the container.
2. Place the sponges in the seed box (the holes of the sponges should be facing up) and continue pouring water into the seed box until the water fills the container halfway.



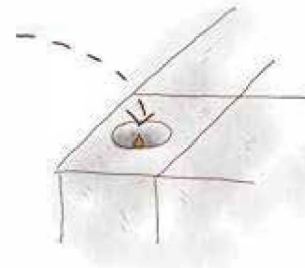
Water Line  
Slightly Above  
the Seeds



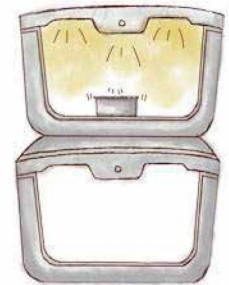
3. Place one seed in each of the sponge holes using the tweezers. The seeds should sit slightly below the water line.
4. Place the seed box in the shade for 12-24 hours and wait for the seeds to sprout.

## Step 2 – Seeding

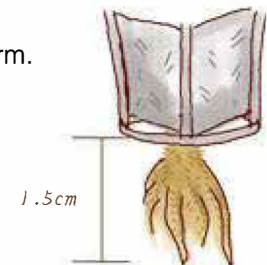
The seeds will begin to sprout at the top.



Once the seeds have begun to sprout, place the seed box with the sprouting seeds directly into the unit and keep lit for 5-7 days.



Roots will begin to form.



## Notes

This unit includes an intelligent lighting system and will automatically start a day/night cycle of 14 hours of light and 10 hours of dark.

### Activating Day/Night Cycle

To boost the growth of vegetables, we recommend starting the lighting cycle between 5:00-9:00 AM. This is as simple as plugging in the hydroponic unit at the time you want the unit to light up every morning.

For example: if the unit is plugged in at 5:00 AM, it will automatically start up at 5:00 AM every morning, stay lit for 14 hours, and turn back on at 5:00 AM the next morning.

### Setting Deactivation Time

This unit can be set to record a specific deactivation time.

At the desired time of deactivation, press the button for 3-5 seconds while the unit is plugged in. The green light will stay lit, even though the unit's grow lights are switched off. The unit will record this time as the deactivation time.

For example, if the button is pressed for 3-5 seconds while plugged in at 8:00 PM, after 10 hours of no light, the unit will turn its grow lights on automatically.

## Step 3 – Watering and Nutrition



Type A Nutrition Concentrate (not included)



Type B Nutrition Concentrate (not included)



2 Gallons of Water



Tweezers



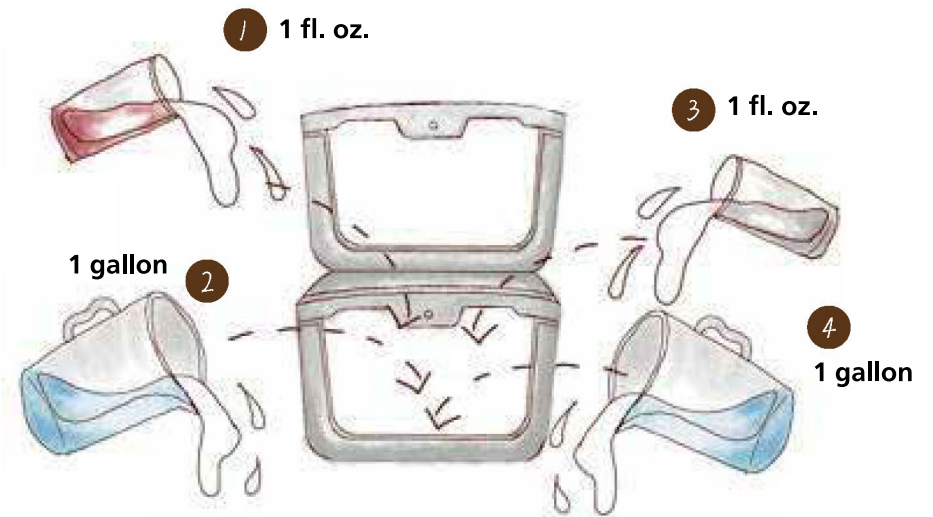
Planting Basket

1. Remove the planting bed or open the water access lid.



Water Access Lid

2. Take 1 fl. oz. of Type A nutrition and mix it with 1 gallon of water. Take 1 fl. oz. of Type B nutrition and mix it with a second, separate gallon of water.

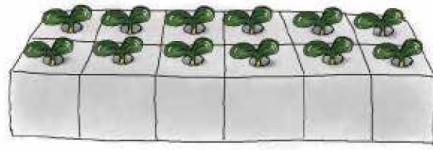


3. There should now be two separate containers: one filled with a Type A nutrition and water mixture and a second, Type B nutrition and water mixture. Remove the water access lid and pour the Type A nutrition/water mixture into the base first; then, pour in the Type B nutrition/water mixture.

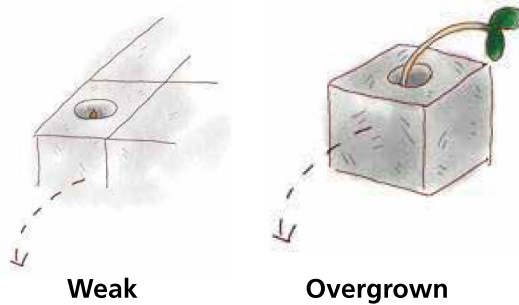
**NOTE:** Ensure that the nutrition water mix process is completed thoroughly to avoid sediment from accumulating in the base.

Be sure to carefully follow the measurements in #2 above, as a high density of nutrition will burn the roots and a low density will impact growth.

4. Gently separate the big sponge into smaller pieces, so each sprout is standing in its own individual small sponge.



5. Remove overgrown and weak sprouts from the group.

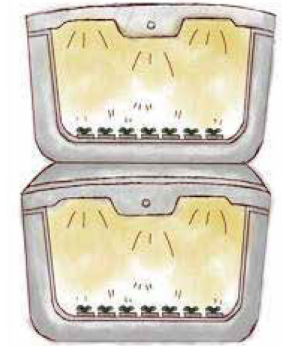


6. Insert the small sponges, with the sprouts inside, into the planting baskets. Make sure the sponge sits flush against the bottom of the planting basket, so the roots can grow vertically.



**NOTE:** Avoid squeezing all the water out of the sponge and keep the roots intact.

7. Place the planting baskets into their own planting bed holes. Make sure the roots are in contact with the water and turn on the lighting cycle until fully grown.



### Tips

- If there are empty holes in the planting bed, cover them with planting hole caps to avoid algae from growing in the water below.
- During harvest, try to remove all broken roots from the base and keep the planting basket for the next planting cycle.
- We recommend cleaning the base every 3 months. Completely drain the water, remove any residue and broken roots.

